

# BLAST



# BLAST

E una pietra?  
E un marmo?  
E un cemento?

BLAST è tutto questo  
in una Collezione  
moderna di pietra,  
marmo e cemento tutto  
miscelato!



Is it stone?  
Is it marble?  
Is it concrete?

BLAST is a little  
of everything in a  
modern rendition  
of stone, marble,  
and concrete all  
mixed together!



BLAST





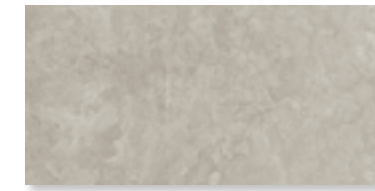
# BLAST GRIGIO



44,5x89,5 cm (17 1/2"x35 1/4") Rett./Lapp.



14,5x89,5 cm (5 3/4"x35 1/4") Rett. /Lapp.



30x60 cm (12"x24") Nat.  
29,5x59,5 cm (11 3/4"x23 3/4") Rett. /Lapp.



14,5x59,5 cm (5 3/4" x23 3/4") Rett. /Lapp.



MOSAICO  
30x30 cm (12"x12")  
5x5 cm (2"x2")



MIX TAPPETO  
30x30 cm (12"x12")  
2,5x2,5 cm (1"x1")  
Miscela di quattro colori  
Four color random mix



BATTISCOPA 7x60 cm (2 3/4"x24") Nat.  
7x59,5 cm (2 3/4"x23 3/4") Rett. /Lapp.



BATTISCOPA 7x89,5 cm (2 3/4"x35 1/4") Rett. /Lapp.

Blast Grigio 44,5x89,5 cm (17 1/2"x35 1/4") Rett.



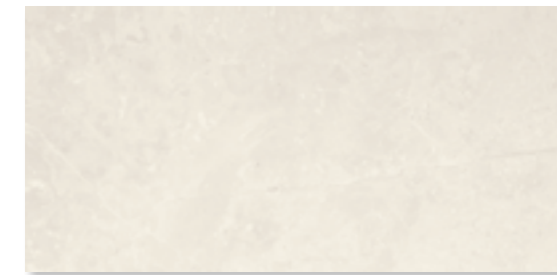
# BLAST GRIGIO



Blast Grigio 30x60 cm (12"x24") Nat.



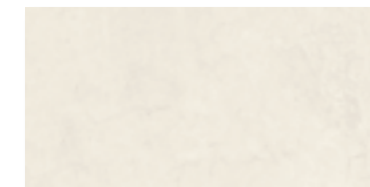
# BLAST BIANCO



44,5x89,5 cm (17 1/2"x35 1/4") Rett./Lapp.



14,5x89,5 cm (5 3/4"x35 1/4") Rett. /Lapp.



30x60 cm (12"x24") Nat.  
29,5x59,5 cm (11 3/4"x23 3/4") Rett. /Lapp.



14,5x59,5 cm (5 3/4" x23 3/4") Rett. /Lapp.



MOSAICO  
30x30 cm (12"x12")  
5x5 cm (2"x2")



MIX TAPPETO  
30x30 cm (12"x12")  
2,5x2,5 cm (1"x1")  
Miscela di quattro colori  
Four color random mix



BATTISCOPIA 7x60 cm (2 3/4"x24") Nat.  
7x59,5 cm (2 3/4"x23 3/4") Rett. /Lapp.



BATTISCOPIA 7x89,5 cm (2 3/4"x35 1/4") Rett. /Lapp.

Blast Bianco 29,5x59,5 cm (11 3/4"x23 3/4") Rett./Lapp.

Blast Antracite 14,5x59,5 cm (5 3/4"x23 3/4") Rett./Lapp.





# BLAST ANTRACITE



44,5x89,5 cm (17 1/2"x35 1/4") Rett./Lapp.



14,5x89,5 cm (5 3/4"x35 1/4") Rett. /Lapp.



30x60 cm (12"x24") Nat.  
29,5x59,5 cm (11 3/4"x23 3/4") Rett. /Lapp.



14,5x59,5 cm (5 3/4" x23 3/4") Rett. /Lapp.



MOSAICO  
30x30 cm (12"x12")  
5x5 cm (2"x2")



MIX TAPPETO  
30x30 cm (12"x12")  
2,5x2,5 cm (1"x1")  
Miscela di quattro colori  
Four color random mix



BATTISCOPIA 7x60 cm (2 3/4"x24") Nat.  
7x59,5 cm (2 3/4"x23 3/4") Rett. /Lapp.



BATTISCOPIA 7x89,5 cm (2 3/4"x35 1/4") Rett. /Lapp.



# BLAST TAUPE



44,5x89,5 cm (17 1/2"x35 1/4") Rett./Lapp.



14,5x89,5 cm (5 3/4"x35 1/4") Rett. /Lapp.



30x60 cm (12"x24") Nat.  
29,5x59,5 cm (11 3/4"x23 3/4") Rett. /Lapp.



14,5x59,5 cm (5 3/4" x23 3/4") Rett. /Lapp.



MOSAICO  
30x30 cm (12"x12")  
5x5 cm (2"x2")



MIX TAPPETO  
30x30 cm (12"x12")  
2,5x2,5 cm (1"x1")  
Miscela di quattro colori  
Four color random mix



BATTISCOPIA 7x60 cm (2 3/4"x24") Nat.  
7x59,5 cm (2 3/4"x23 3/4") Rett. /Lapp.



BATTISCOPIA 7x89,5 cm (2 3/4"x35 1/4") Rett. /Lapp.

Blast Taupe 44,5x89,5 cm (17 1/2"x35 1/4") Rett.

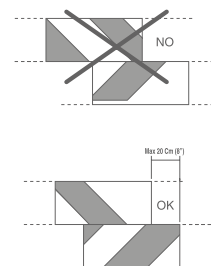


# Caratteristiche Tecniche • Technical features • Technische eigenschaften\*

Gres porcellanato impasto colorato - Through body porcelain stoneware - Durchgefaerbtes feinsteinzeug - UGL

	NORME TEST N°	DESCRIZIONE DESCRIPTION	VALORE A NORMA REQUIRED STANDARD	VALORE - MATT RESULTS - MATT	VALORE - LAPP RESULTS - LAPP
	ISO 10545/3	ASSORBIMENTO D'ACQUA - WATER ABSORPTION ABSORPTION D'EAU - WASSERAUFNAHME	≤ 0,5%	CONFORME CONFORMS	CONFORME CONFORMS
	ISO 10545/4	RESISTENZA ALLA FLESSIONE - BENDING STRENGTH RESISTANCE A LA FLEXION - BIEGESTÄRKE	R ≥ 35 N/mm <sup>2</sup>	CONFORME CONFORMS	CONFORME CONFORMS
	ISO 10545/8	COEFFICIENTE DI DILATAZIONE TERMICA LINEARE THERMAL EXPANSION COEFF. BETWEEN 20°C - 100°C COEFF. DE DILATATION THERMIQUE LINEAIRE ENTRE 20°C ET 100°C WÄRMEAUSSDEHNUNG ZWISCHEN 20°C UND 100°C	≤ 9x10 <sup>-6</sup>	9x10 <sup>-6</sup> °C <sup>-1</sup>	9x10 <sup>-6</sup> °C <sup>-1</sup>
	ISO 10545/9	RESISTENZA AGLI SBALZI TERMICI - RESISTANCE TO THERMAL SHOCK RESISTANCE AUX CHOCs THERMIQUES TEMPERATURWECHSELBESTÄNDIGKEIT		RESISTE - RESISTANT RESISTE - BESTÄNDIG	RESISTE - RESISTANT RESISTE - BESTÄNDIG
	ISO 10545/11	RESISTENZA AL CAVILLO - CRAZING RESISTANCE RESISTANCE AU TRASSAILAGE - HAARRISSEFESTIGKEIT		RESISTE - RESISTANT RESISTE - BESTÄNDIG	RESISTE - RESISTANT RESISTE - BESTÄNDIG
	ISO 10545/14	RESISTENZA ALLE MACCHIE - STAIN RESISTANCE RESISTANCE AUX TACHES - FLECKENFESTIGKEIT	min. Classe 3	CONFORME CONFORMS	CONFORME CONFORMS
	ISO 10545/13	RESISTENZA ALL'ATTACCO CHIMICO - CHEMICAL RESISTANCE RESISTANCE À L'ATTACQUE CHIMIQUE - FÄHIG GEBEN SÄUREN UND LAUGEN	min. GB	CONFORME CONFORMS	CONFORME CONFORMS
	ISO 10545/2	LUNGHEZZA E LARGHEZZA - LENGTH AND WIDTH LONGUEUR ET LARGEUR - LÄNGE UND BREITE	± 0,5%	CONFORME CONFORMS	CONFORME CONFORMS
	ISO 10545/2	SPESSORE - THICKNESS ÉPAISSEUR - STÄRKE	± 5%	CONFORME CONFORMS	CONFORME CONFORMS
	ISO 10545/2	ORTOGONALITÀ - WEDGING ORTHOGONALITÉ - RECHTWINKLICHKEIT	± 0,6%	CONFORME CONFORMS	CONFORME CONFORMS
	ISO 10545/2	PLANARITÀ - WARPAGE PLANÉITÉ - EBENFLÄCHIGKEIT	± 0,5%	CONFORME CONFORMS	CONFORME CONFORMS
	ISO 10545/12	RESISTENZA AL GELO - FROST RESISTANCE RESISTANCE AU GEL - FROSTBESTÄNDIGKEIT		RESISTE - RESISTANT RESISTE - BESTÄNDIG	RESISTE - RESISTANT RESISTE - BESTÄNDIG
	ISO 10545/6	RESISTENZA ALL'ABRAZIONE PROFONDA DEEP ABRASION RESISTANCE RESISTANCE À L'ABRASION PROFONDE TIEFENVERSCHLEISSBESTÄNDIGKEIT	< 175 mm <sup>3</sup>	CONFORME CONFORMS	CONFORME CONFORMS
	BOT 3000 WET DCOF  DIN 51130 R	RESISTENZA ALLO SCIVOLAMENTO SLIP RESISTANCE - RESISTANCE AU GLISSEMENT BESTIMMUNG DER RUTSCHEMME EIGENSCHAFT  water, oil, grease, etc. create slippery conditions. floor applications with exposure to these conditions require extra caution in product selection.	≥ 0,42	Tile 1: 0,59 Tile 2: 0,59 Tile 3: 0,59	R 9

\* These values may vary from lot to lot



**SOLUZIONI DI POSA**  
cm 45x90 - 18"x36"  
cm 30x60 - 12"x24"  
Per una corretta realizzazione si consiglia di posare i formati lunghezza 90 cm e 60 cm, sfalsati a correre al massimo 20 cm o posa pari.

**INSTALLATION INFORMATION**  
cm 45x90 - 18"x36"  
cm 30x60 - 12"x24"  
For 90 cm (36") and 60 cm (24") long files, staggering should not exceed 20 cm (8").

**VERLEGEBEISPIELE**  
cm 45x90 - 18"x36"  
cm 30x60 - 12"x24"  
Für einen korrekten und einwandfreien Belag, die Formaten mit 90 cm und 60 cm länge sollten bei der Verlegung maximal 20 cm versetzt sein.

**SHADE VARIATION**  
**V2** SLIGHT/MODERATE  
Product with slight to moderate variation

Noi consigliamo fortemente l'uso di un sistema di posa con distanziatori autolivellanti.

We strongly recommend using a tile edge leveling system during installation.

Wir empfehlen dringend die Verwendung von einem Befestigungssystem mit leveling system.

Il est vivement recommandé l'utilisation d'un système de pose avec des croisillons autonivelant.

## IMBALLI PACKAGING

UNITÀ DI MISURA  
UNIT OF MEASURES



Blast Rett/Lapp	44,5x89,5 (17 1/2"x35 1/4")	M <sup>2</sup>	3	29,66	1,215	30	36,45	889,80
Blast Nat.	30x60 (12"x24")	M <sup>2</sup>	6	22,41	1,08	48	51,84	1075,68
Blast Rett.	29,5x59,5 (11 3/4"x23 3/4")	M <sup>2</sup>	6	21,91	1,08	48	51,84	1051,68
Blast Lapp.	29,5x59,5 (11 3/4"x23 3/4")	M <sup>2</sup>	6	22,91	1,08	48	51,84	1099,68
Blast Rett/Lapp	14,5x89,5 (5 3/4"x 35 1/4")	M <sup>2</sup>	6	20,92	0,81	32	25,92	669,44
Blast Rett/Lapp	14,5x59,5 (5 3/4"x 23 3/4")	M <sup>2</sup>	10	18,55	0,90	40	36,00	742,00
Blast Mos.Tappeto 2,5x2,5 (1"x1")	30x30 (12"x12")	FOGLIO/SHEET	8	14,50	-	42	-	609,00
Blast Mosaico 5x5 (2"x2")	30x30 (12"x12")	FOGLIO/SHEET	8	14,50	-	42	-	609,00
Blast Battiscopa Nat/Rett/Lapp	7x60 (2 3/4"x24")	PZ	15	14,00	-	40	-	560,00
Blast Battiscopa Rett/Lapp	7x90 (3 3/4"x36")	PZ	6	10,25	-	40	-	410,00



100%  
MADE IN ITALY

Ceramics of Italy

Verde 1999 srl - Via Ghiarola Nuova, 158 - 41042 Fiorano Modenese, MO Italy  
tel +39 0536 832393 - fax +39 0536 913591 - www.verde1999.com - info@verde1999.com

